

habitation
installation

statement of purpose: To research, design and construct a space which challenges the norms of current housing trends.

venue: **archop** is a quarterly architecture exhibition which focuses on "the need for an improved built environment in Fresno." For the upcoming **archop** we will design and build a full-scale model of an 'efficiency unit.' The installation will allow visitors to experience and respond to the space firsthand.

date: February 5th, 2009
location: Broadway Studios

time: 5p-8p
address: 1416 Broadway

background: Originally conceived as part of a design competition for a vacated lot in Downtown Fresno, we propose to build these spaces in an effort to relieve some of the severe impacts which homelessness and a lack of affordable housing have on the urban core of our City.

objective: The project concerns itself with the efficiency of living space and asks the question "what is the minimum amount of space required for a successful dwelling." Dwelling spaces that maximize efficiency and minimize building area have myriad benefits to society, culture, industry, and economy. By examining common human behavior - both the necessary and social - and daily function of working class people, we can design and arrange space that eliminates excess.

homelessness: We recognize the increasing need for affordable housing in Fresno. Amidst a global financial crisis, the population of displaced persons is rapidly increasing. The issue has recently received a jolt of energy through the Fresno City and County adoption of the Ten Year Plan to End Chronic Homelessness. The issue has also gained momentum through the support of newly elected Mayor Ashley Swearingin, Chair of County Board of Supervisors Susan Anderson, and the City of Fresno Housing Authority. In order to realize physical progress on this issue, a new paradigm for housing and lifestyle must emerge.

team: The issues which this project addresses cross over several disciplines. Spanning beyond architecture, the project will leverage the knowledge and expertise of people from the fields of anthropology, development, construction, sustainability, interior design and art.

Specifically through our collaboration with CSU-Fresno Department of Anthropology faculty and students, we will solicit, observe, document and analyze behavioral and communicated responses to the built spaces. Led by Dr. Henry Delcore this research will then be used to drive the re-design of the spaces to be built as part of the larger housing project.



Viollet-le-Duc - The First House



Ten Year Plan to End Homelessness

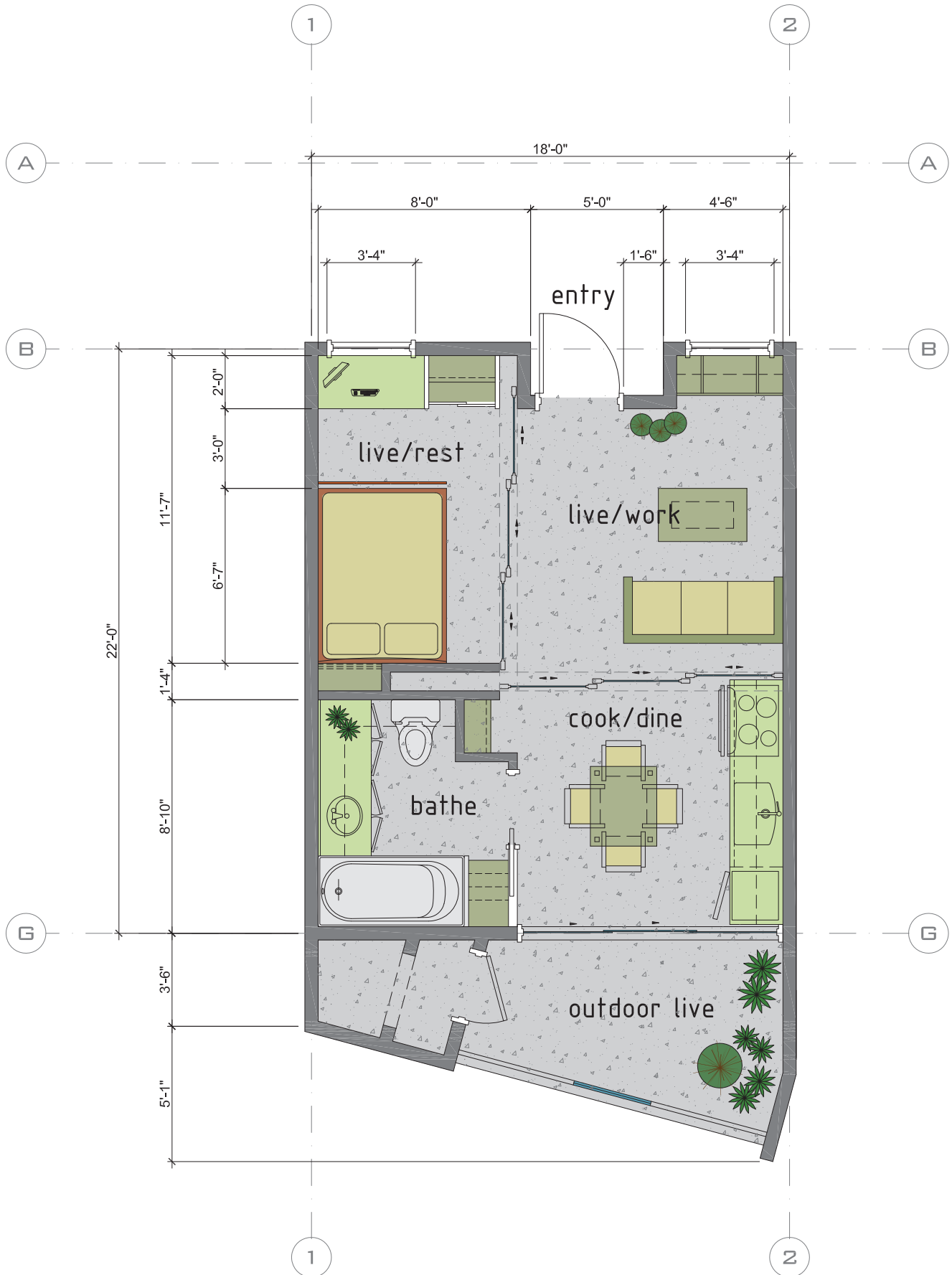


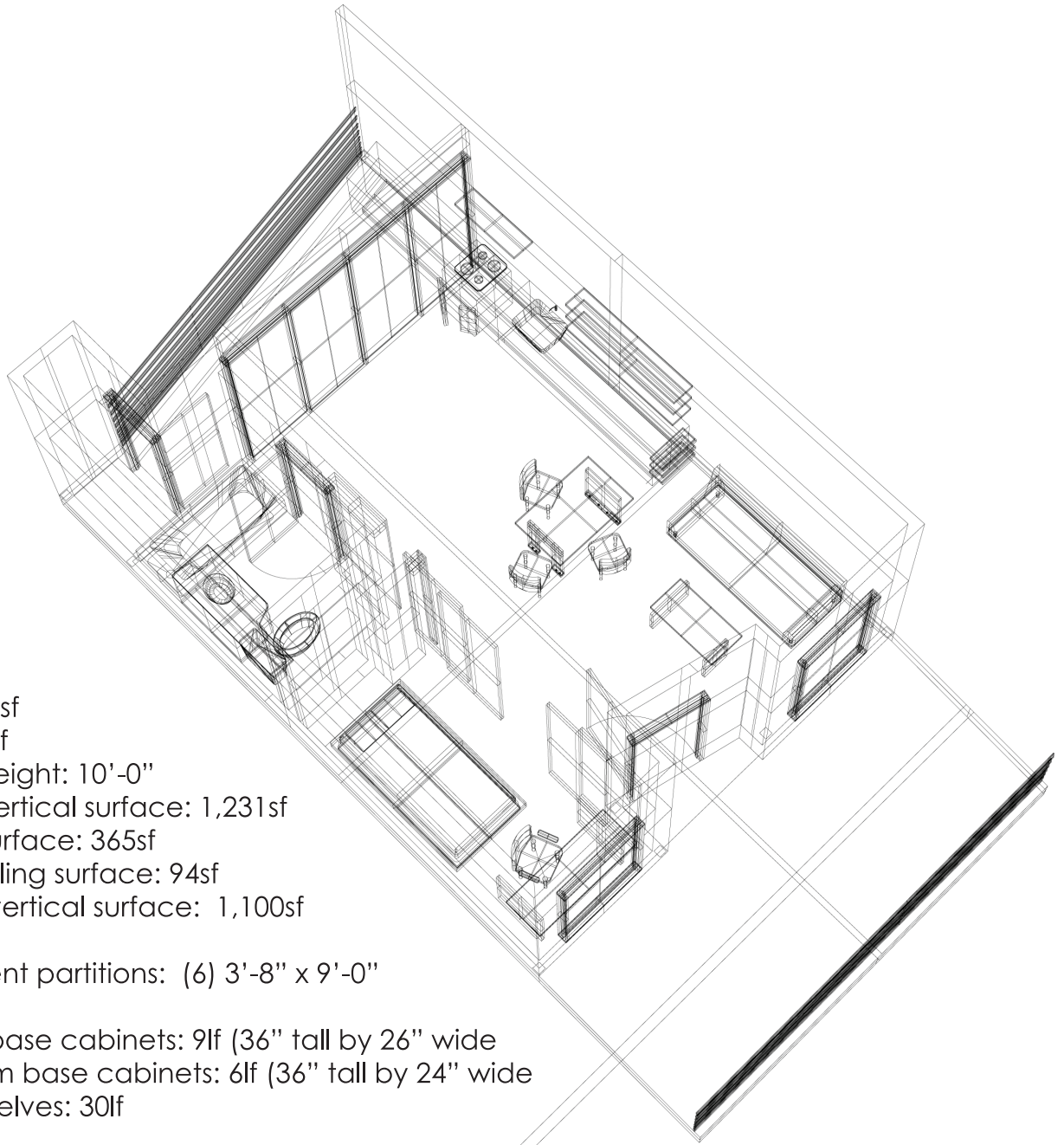
Exterior Materials Palette



Wireframe Isometric of Living Space

habitation
installation





floor: 351sf
wall: 123lf
ceiling height: 10'-0"
interior vertical surface: 1,231sf
ceiling surface: 365sf
patio ceiling surface: 94sf
exterior vertical surface: 1,100sf

translucent partitions: (6) 3'-8" x 9'-0"

kitchen base cabinets: 9lf (36" tall by 26" wide)
bathroom base cabinets: 6lf (36" tall by 24" wide)
upper shelves: 30lf

exterior glazing: operable 9'-10" wide by 9'-0" tall
(2) 3'-4" wide by 14" tall operable windows
doors: (1) exterior grade front door (1) bathroom pocket door

appliances: range/microwave/undercounter refrigerator/kitchen sink/bathroom sink/water closet/bathtub

furniture: sofa/bed (full)/desk/task chair/coffee table

accessories + furnishings: misc.
dinnerware/books/computer/guitar/paintings/blankets/linens/bbq